



#### Production standard: ETFPC - with gradual DC brake

Mounting - arrangement	<b>B3</b>
Terminal box position	<b>PST DX E - Left side near fan cover</b>
Paint finish	● <b>non verniciato</b>
Terminal box type	<b>2CA - 2 alluminium components (box + cover)</b>
Connections	
Rated voltage	<b>230/400V - 50Hz ( P<sub>n</sub> ≤ 3 kW)</b> <b>400/690V - 50Hz ( P<sub>n</sub> &gt; 3 kW)</b>
Brake power supply (supplied disconnected)	<b>230V ( P<sub>n</sub> ≤ 3 kW)</b> <b>400V ( P<sub>n</sub> &gt; 3 kW)</b>
Protection rating	<b>IP54 - Protection against dust, water splashes from all directions</b>
Duty	<b>S6- 60% - periodic constant service no load 6min/4min on load</b>
Winding insulation	<b>F</b>
Bearings	<b>2RS &lt;&gt;</b>
End-shield assembly	<b>Tie rods</b>
Fan cover	<b>E48 aluminium - E63/E80 plastic</b>

#### ETFPC Low centre motor with FPC brake

3000 min<sup>-1</sup> 2 poles 50 Hz - V=230/400V @ P<sub>n</sub> ≤ 3 kW , V=400/690V @ P<sub>n</sub> > 3 kW

Size	P <sub>n</sub> kW	P <sub>n</sub> Hp	n min <sup>-1</sup>	Inom A	cosφ	η %	M <sub>n</sub> Nm	Mm/Mn	Ms/Mn	Is/In	J Kgm <sup>2</sup>	Weight Kg
E48Sb	0,55	0,75	2700	1,4	0,84	67	1,94	2	2,1	3	0,00057	6,6
E48Sc	0,75	1	2700	1,9	0,86	66	2,65	2	1,9	3,2	0,00063	7,5
E48Ma	1,1	1,5	2700	2,6	0,83	75	3,89	2,5	2,6	3,9	0,00068	9
E48Mb	1,3	1,8	2700	3,1	0,82	74	4,6	2,8	2,5	4,5	0,00075	10,5
E48L	1,5	2	2700	3,6	0,82	74	5,3	3,2	3,3	4,6	0,00081	11
E63Sa	1,1	1,5	2700	2,6	0,83	75	3,89	2,3	2,3	4,6	0,0017	12,9
E63Sb	1,5	2	2700	3,4	0,85	75	5,3	2,6	2,5	4,3	0,00185	13,7
E63Sc	1,85	2,5	2750	4,2	0,85	75	6,42	3	3	4,5	0,002	14,7
E63La	2,2	3	2750	4,7	0,85	80	7,64	3,2	3,2	5,5	0,00213	17,7
E63Lb	3	4	2800	6,4	0,84	81	10,2	3,2	3,5	6	0,00225	19,2
E80S	3	4	2850	6,4	0,84	81	10	3,2	3,2	6	0,00283	28
E80Sb	4	5,5	2890	8,8	0,8	82	13,2	3,3	3,4	6,8	0,00323	30
E80M	5,5	7,5	2880	11,7	0,8	85	18,2	3,6	3,5	6,8	0,00348	33,8
E80L	7,5	10	2870	15	0,85	85	25	3,1	3,3	6	0,00398	41,3

#### data tables

#### ETFPC Low centre motor with FPC brake

1500 min<sup>-1</sup> 4 poles 50 Hz - V=230/400V @ P<sub>n</sub> ≤ 3 kW , V=400/690V @ P<sub>n</sub> > 3 kW

Size	P <sub>n</sub> kW	P <sub>n</sub> Hp	n min <sup>-1</sup>	Inom A	cosφ	η %	M <sub>n</sub> Nm	Mm/Mn	Ms/Mn	Is/In	J Kgm <sup>2</sup>	Weight Kg
E48S	0,37	0,5	1400	1,55	0,54	65	2,52	3,9	4	3,5	0,00073	7,7
E48M	0,55	0,75	1300	1,7	0,7	67	4,04	2,5	2,6	3,2	0,00083	9,5

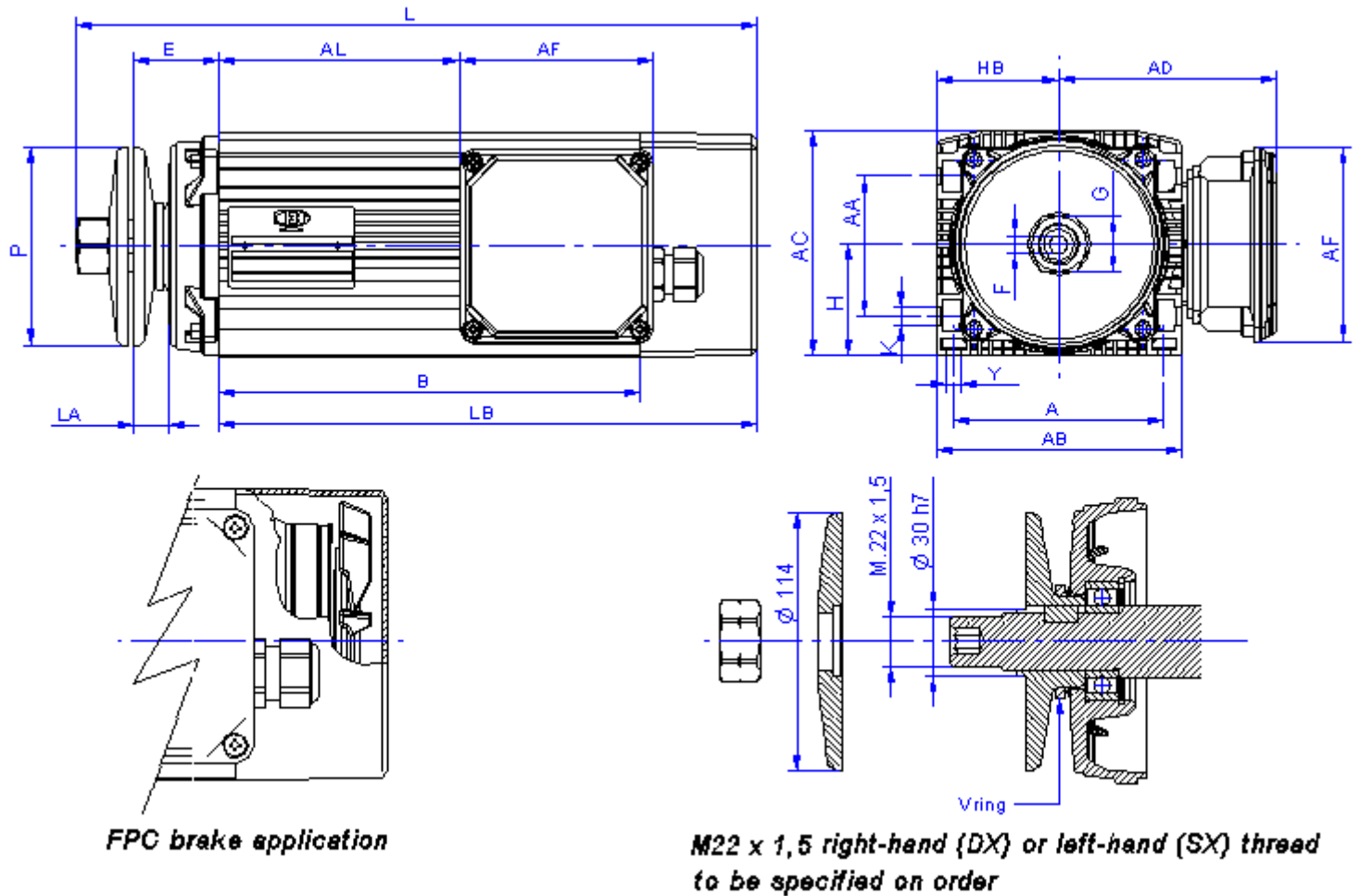
**ETFPC Low centre motor with FPC brake**

1500 min<sup>-1</sup> 4 poles 50 Hz - V=230/400V @ Pn≤ 3 kW , V=400/690V @ Pn> 3 kW

Size	Pn kW	Pn Hp	n min <sup>-1</sup>	Inom A	cosφ	η %	Mn Nm	Mm/Mn	Ms/Mn	Is/In	J Kgm <sup>2</sup>	Weight Kg
E48L	0,75	1	1300	2,3	0,78	60	5,51	2,2	2,3	2,2	0,00088	10,3
E63Sa	0,75	1	1380	2	0,72	74	5,19	2,1	2	3,5	0,0022	13,4
E63Sb	1,1	1,5	1400	2,7	0,77	76	7,5	2,2	2,3	3,9	0,00235	14,8
E63La	1,5	2	1300	4	0,75	73	11	1,8	2	3	0,0026	16,8
E80S	2,2	3	1400	5	0,8	80	15	3	2,7	5	0,00403	26
E80M	3	4	1370	6,8	0,8	80	20,9	2,2	2,3	4,4	0,00448	32,5

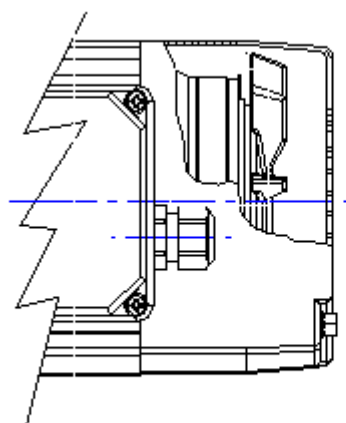
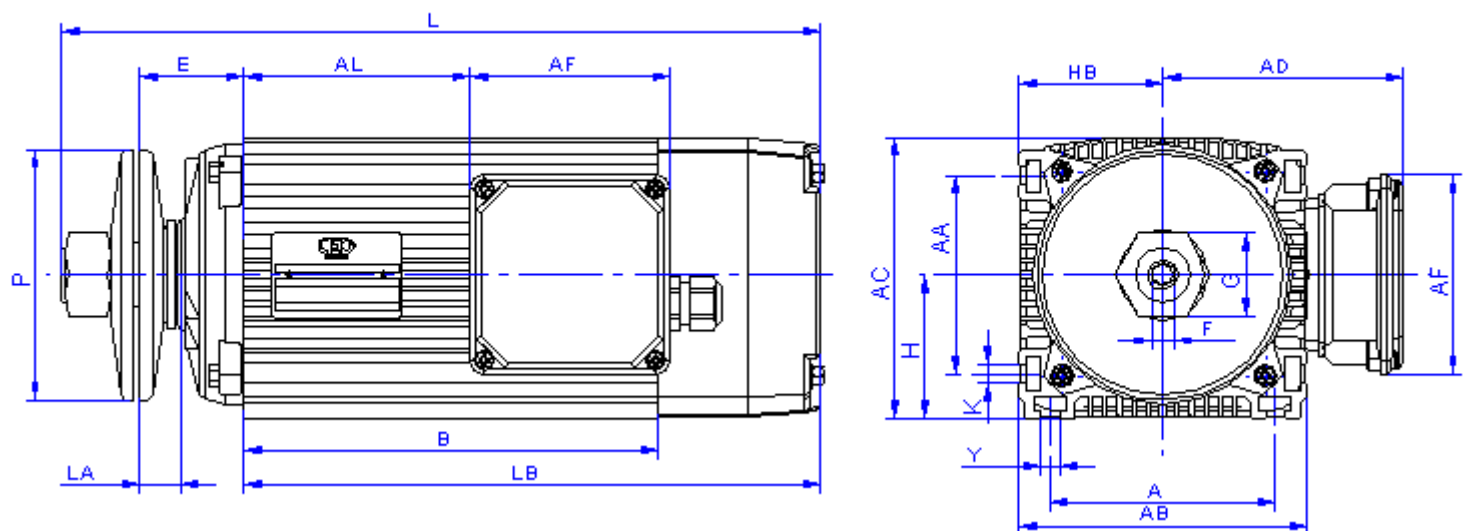
**dimension diagrams**

**DISTANCE BETWEEN SHAFTS 63/71 mm (E63)  
THREE PHASE  
WITH BLADE DISCS (B3)**

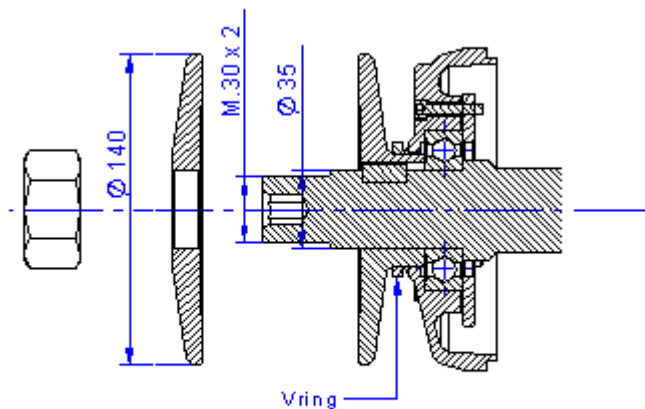


Size	A	AB	AC	AA	B	E	F	G	H	HB	L	LB	K	Y	P	AD	AF	AL	LA
E63S	120	140	128	80	180	49	10	32	63	71	330	247	10	8	114	125	111	77	20
E63L	120	140	128	80	240	49	10	32	63	71	390	307	10	8	114	125	111	137	20

**DISTANCE BETWEEN SHAFTS 80 mm (E80)  
THREE PHASE  
WITH BLADE DISCS (B3)**



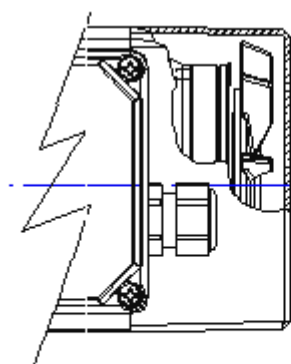
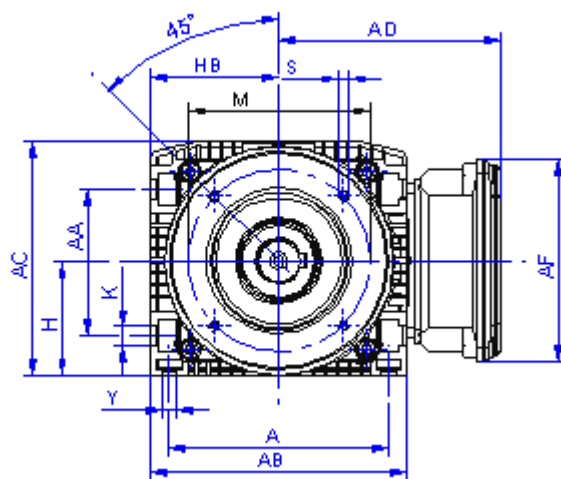
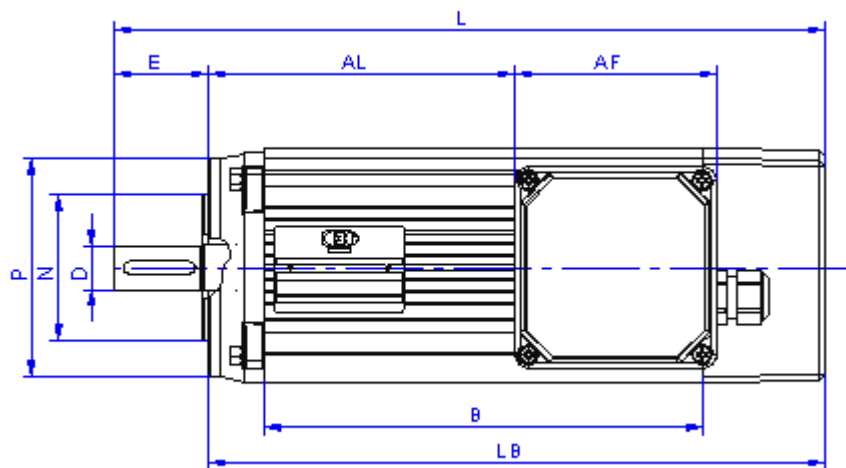
**FPC brake application**



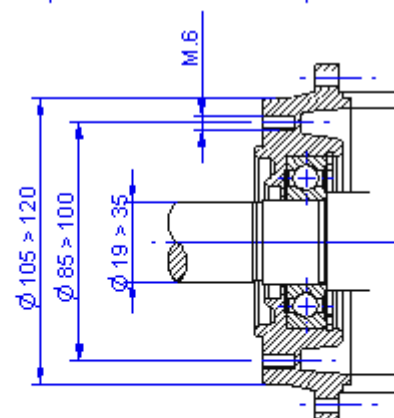
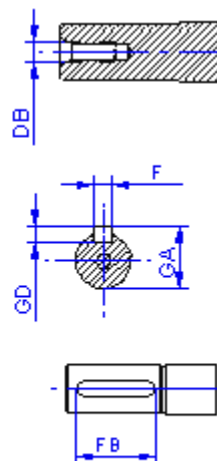
**M30 x 2 right-hand (DX) or left-hand (SX) thread to be specified on order**

Size	A	AB	AC	AA	B	E	F	G	H	HB	L	LB	K	Y	P	AD	AF	AL	LA
E80S	125	160	156	110	230	58	12	46	80	80	421	320	10	10	140	135	111	125	23
E80M	125	160	156	110	280	58	12	46	80	80	471	370	10	10	140	135	111	175	23
E80L	125	160	156	110	350	58	12	46	80	80	541	440	10	10	140	135	111	245	23

**DISTANCE BETWEEN SHAFTS 63/71 mm (E63)  
THREE PHASE  
WITH COUPLING FLANGE (B14)**



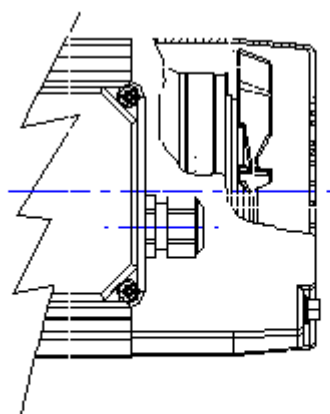
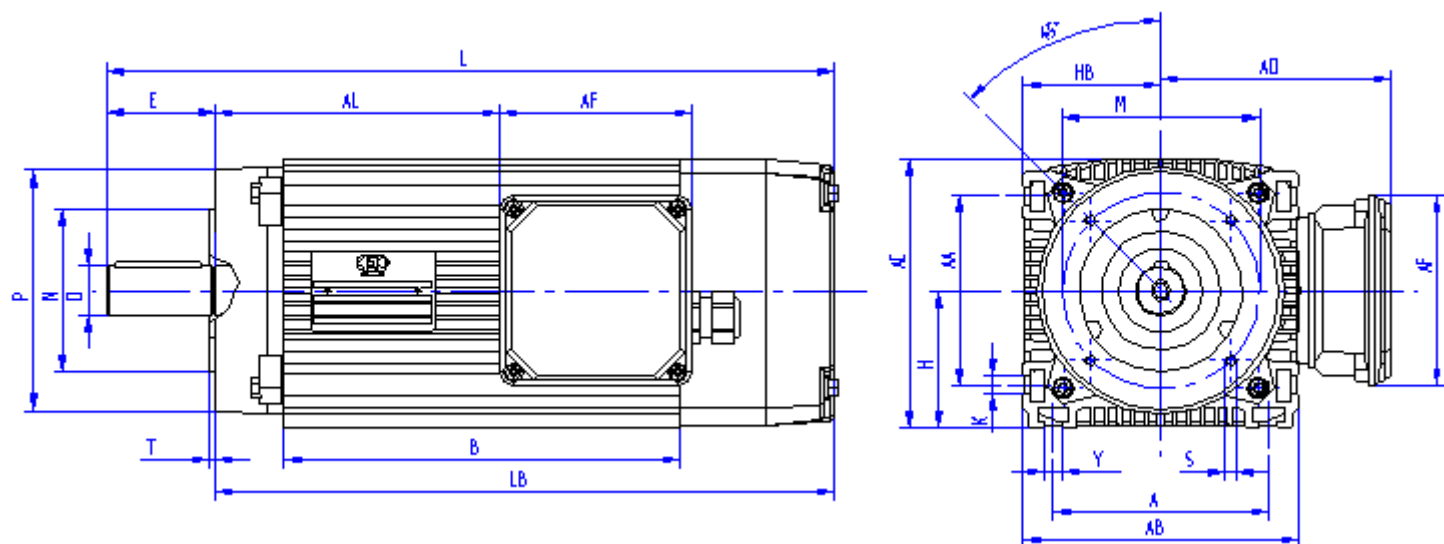
*FPC brake application*



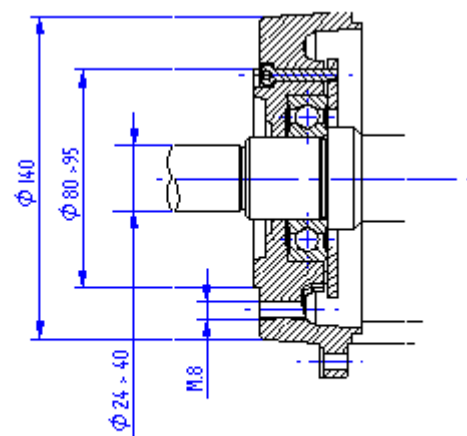
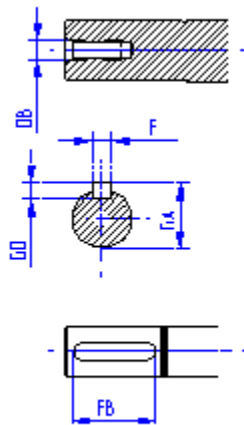
*Optional flange dimension*

Size	A	AB	AC	AA	B	H	HB	L	LB	Y	K	P	N	M	T	S	D	E	F	FB	GA	GD	AD	AF	AL	DB
E63S	120	140	128	80	180	63	71	321	281	8	10	120	80	100	3	M6	19	40	6	30	21,5	6	125	111	111	M6
E63L	120	140	128	80	240	63	71	391	341	8	10	120	80	100	3	M6	24	50	8	40	27	7	125	111	171	M8

**DISTANCE BETWEEN SHAFTS 80 mm (E80)**  
**THREE PHASE**  
**WITH COUPLING FLANGE (B14)**



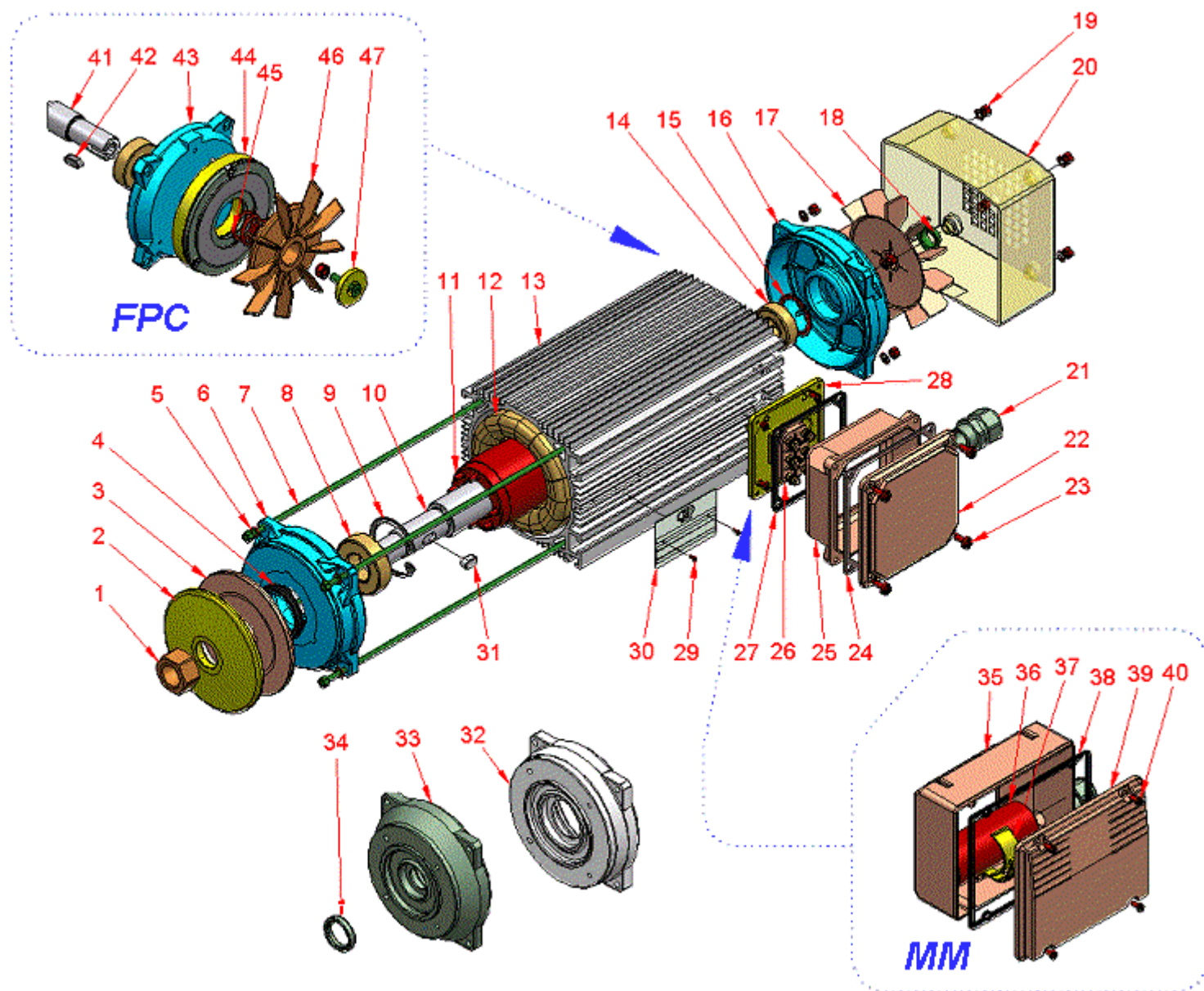
**FPC brake application**



**Optional flange dimension**

Size	A	AB	AC	AA	B	H	HB	L	LB	K	Y	P	N	M	T	S	D	E	F	FB	GA	GD	AD	AF	AL	DB
E80S	125	160	156	110	230	80	80	410	360	10	10	140	95	115	3	M8	24	50	8	40	27	7	134	111	165	M8
E80M	125	160	156	110	280	80	80	470	410	10	10	140	95	115	3	M8	28	60	8	50	31	7	134	111	215	M10
E80L	125	160	156	110	350	80	80	540	480	10	10	140	95	115	3	M8	28	60	8	50	31	7	134	111	285	M10

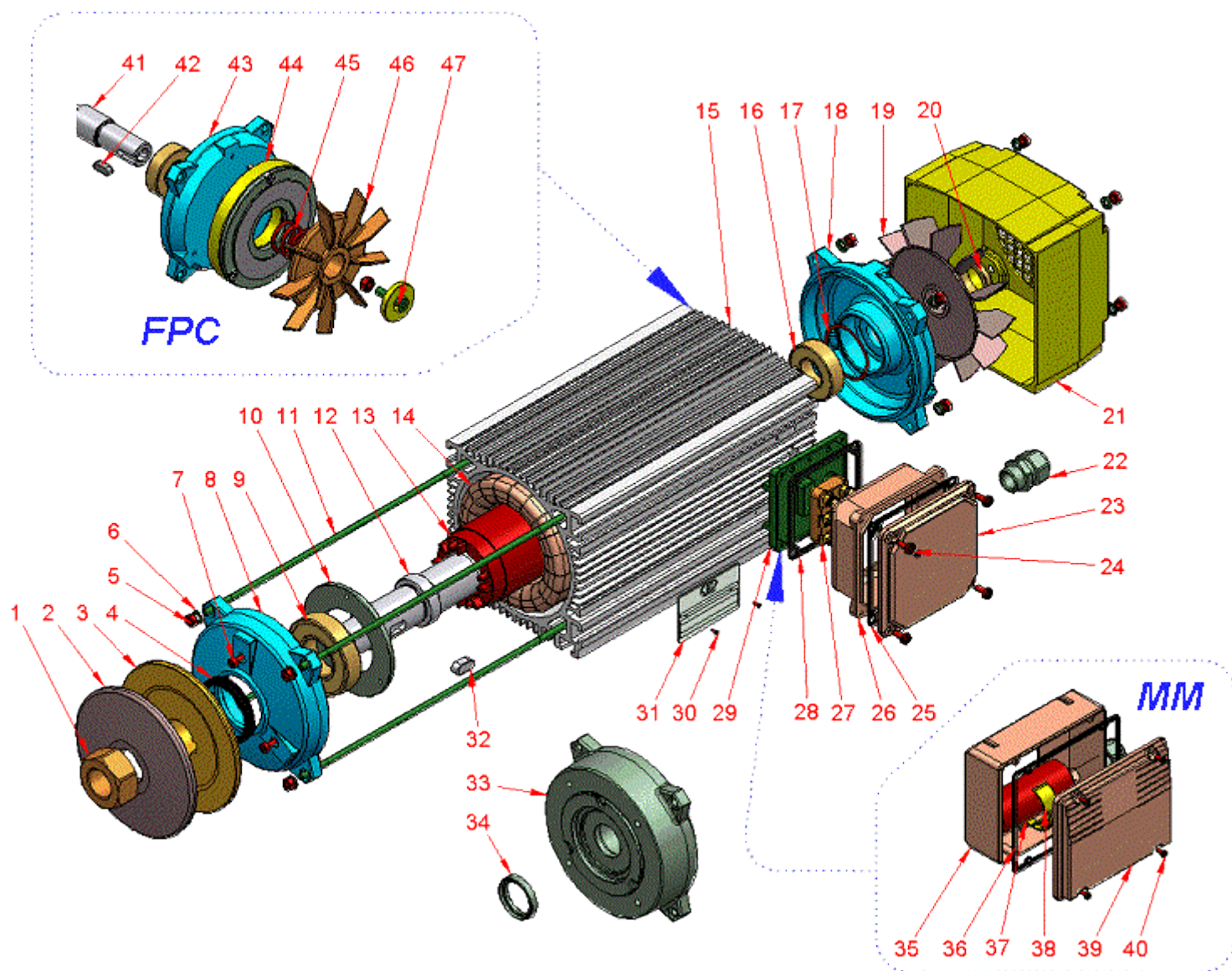
E63 Exploded View



- |                               |                               |  |
|-------------------------------|-------------------------------|--|
| 1 Blade nut                   | 18 Fan tightening ring        | 35 MM type: Capacitor-holder – box         |
| 2 Blade clamping disc         | 19 Tie rods nuts              | 36 MM type: Capacitor                      |
| 3 Blade holding disc          | 20 Fan cover                  | 37 MM type: capacitor clamp                |
| 4 Dust seal (V-ring)          | 21 Cable gland                | 38 MM type: IP55 rubber gasket             |
| 5 Washers                     | 22 Terminal box – cover       | 39 MM type: capacitor holder – cover       |
| 6 End-shield (drive end)      | 23 Terminal box fixing screws | 40 MM type: capacitor holder fixing screws |
| 7 Tie rods                    | 24 IP55 rubber gasket         | 41 FPC version: shaft                      |
| 8 Bearing (drive end)         | 25 Terminal box               | 42 FPC version: shaft key                  |
| 9 Circlip                     | 26 Terminal block             | 43 FPC version: end-shield (non-drive end) |
| 10 Shaft                      | 27 IP55 rubber gasket         | 44 FPC version: brake unit                 |
| 11 Rotor                      | 28 Terminal box base (PVC)    | 45 FPC version: adjustment axial spring    |
| 12 Stator assembly            | 29 Nameplate fixing screws    | 46 FPC version: cooling fan (cast iron)    |
| 13 Casing                     | 30 Nameplate                  | 47 FPC version: brake adjustment screws    |
| 14 Bearing (non-drive end)    | 31 Shaft key                  |  |
| 15 Pre-load washer            | 32 B14 flange IEC80           |  |
| 16 End-shield (non-drive end) | 33 B14 flange IEC71           |  |
| 17 Cooling fan (PVC)          | 34 Oil seal                   |  |

E80 Exploded View



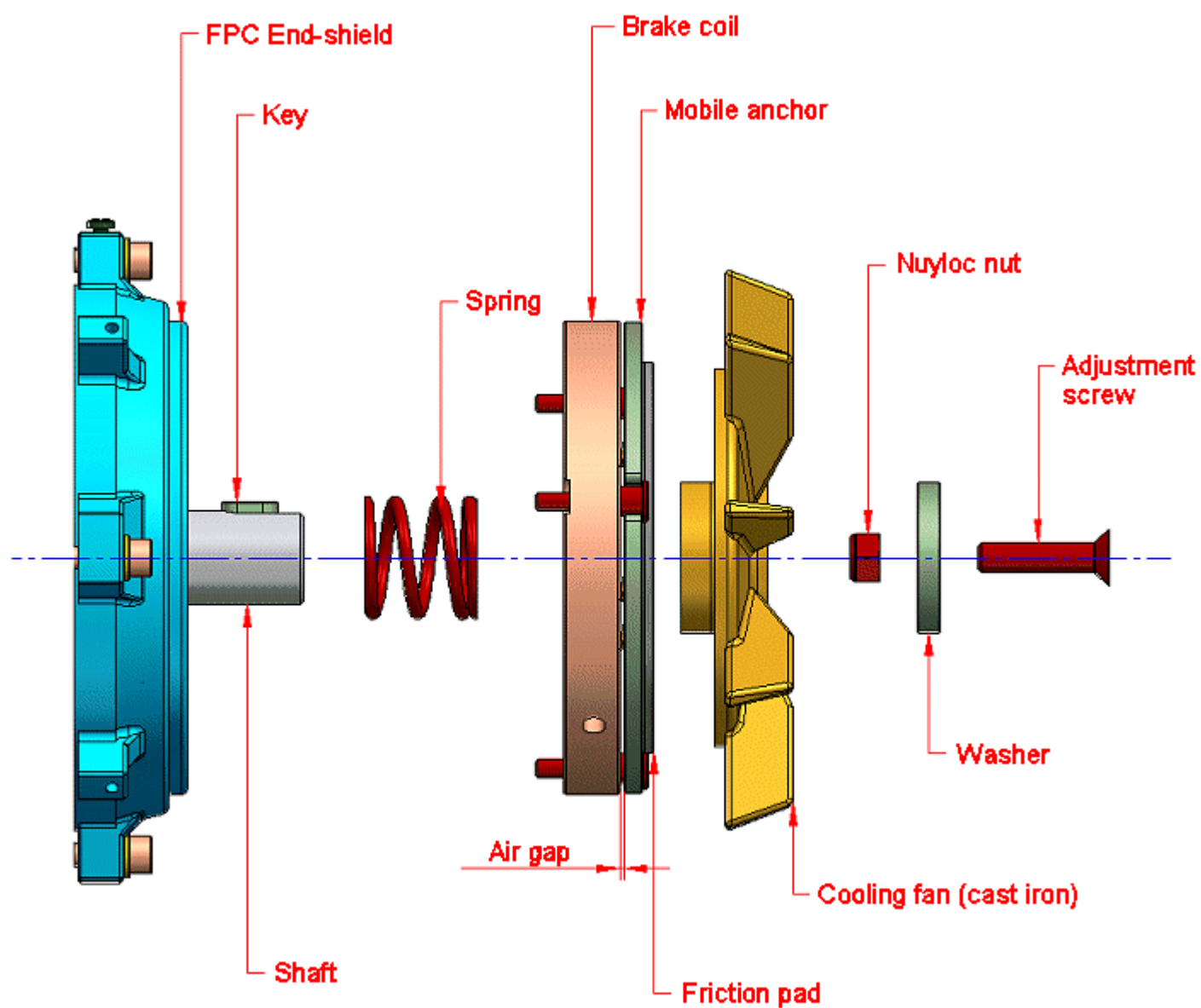


- 1 Blade nut
- 2 Blade clamping disc
- 3 Blade holding disc
- 4 Dust seal (V-ring)
- 5 Tie rods nuts
- 6 Washers
- 7 Bearing fixing disc tightening screws
- 8 Cast iron end-shield (drive end)
- 9 Bearing (drive-end)
- 10 Circlip
- 11 Tie rods
- 12 Shaft
- 13 Rotor
- 14 Stator assembly
- 15 Casing
- 16 Bearing (non-drive end)
- 17 Pre-load washer

- 18 Cast iron end-shield (non-drive end)
- 19 Cooling fan (PVC)
- 20 Fan tightening ring
- 21 Fan cover
- 22 Cable gland
- 23 Terminal box – cover
- 24 Terminal box fixing screws
- 25 IP65 rubber gasket
- 26 Terminal box
- 27 Terminal block
- 28 IP55 rubber gasket
- 29 terminal box plate (PVC)
- 30 Nameplate fixing screws
- 31 Nameplate
- 32 Shaft key
- 33 B14 flange IEC90
- 34 Oil seal

- 35 MM type: IP55 rubber gasket
- 36 MM type: Capacitor-holder – box
- 37 MM type: Capacitor
- 38 MM type: Capacitor clamp
- 39 MM type: Capacitor-holder – cover
- 40 MM type: capacitor holder fixing screws
- 41 FPC version: shaft
- 42 FPC version: shaft key
- 43 FPC version: end-shield (non-drive end)
- 44 FPC version: brake unit
- 45 FPC version: adjustment axial spring
- 46 FPC version: cooling fan (cast iron)
- 47 FPC version: brake adjustment screws

## Brake Data Tables



Size	Braking torque	Power	Closing Time	Release time	Braking gap
	<b>Nm</b>	<b>W</b>	<b>ms</b>	<b>ms</b>	<b>mm</b>
E63	4	18	40	100	0,2
E80	7	25	60	150	0,2