



MY51-S00

1 POLES - 3000/2800 rpm

DESCRIPTION			MECHANICAL SPECIFICATIONS							ELECTRICAL SPECIFICATIONS				
CODE	TYPE	IP	Efficiency class	Synchronous speed n _s [rpm]					Rated speed n _n [rpm]	Max. speed n _m [rpm]	Max. current I _m [A]	Power P [kW]		Wp
			IE1	2500	2800	3000	3200	3400	3600	3800		1500	1800	2000
MY51-S00-000	2500	2		1500	1650	1800	1950	2100	2250	2400	1.00	0.37	0.40	0.45
MY51-S00-001	2800	2		1650	1800	1950	2100	2250	2400	2550	1.00	0.40	0.45	0.50
MY51-S00-002	3000	2		1800	1950	2100	2250	2400	2550	2700	1.00	0.45	0.50	0.55
MY51-S00-003	3200	2		1950	2100	2250	2400	2550	2700	2850	1.00	0.50	0.55	0.60
MY51-S00-004	3400	2		2100	2250	2400	2550	2700	2850	3000	1.00	0.55	0.60	0.65
MY51-S00-005	3600	2		2250	2400	2550	2700	2850	3000	3150	1.00	0.60	0.65	0.70
MY51-S00-006	3800	2		2400	2550	2700	2850	3000	3150	3300	1.00	0.65	0.70	0.75
MY51-S00-007	2500	4		750	825	900	975	1050	1125	1200	0.50	0.20	0.25	0.30
MY51-S00-008	2800	4		825	900	975	1050	1125	1200	1275	0.50	0.25	0.30	0.35
MY51-S00-009	3000	4		900	975	1050	1125	1200	1275	1350	0.50	0.30	0.35	0.40
MY51-S00-010	3200	4		975	1050	1125	1200	1275	1350	1425	0.50	0.35	0.40	0.45
MY51-S00-011	3400	4		1050	1125	1200	1275	1350	1425	1500	0.50	0.40	0.45	0.50
MY51-S00-012	3600	4		1125	1200	1275	1350	1425	1500	1575	0.50	0.45	0.50	0.55
MY51-S00-013	3800	4		1200	1275	1350	1425	1500	1575	1650	0.50	0.50	0.55	0.60
MY51-S00-014	2500	8		375	412	450	487	525	562	600	0.25	0.10	0.15	0.20
MY51-S00-015	2800	8		412	450	487	525	562	600	637	0.25	0.15	0.20	0.25
MY51-S00-016	3000	8		450	487	525	562	600	637	675	0.25	0.20	0.25	0.30
MY51-S00-017	3200	8		487	525	562	600	637	675	712	0.25	0.25	0.30	0.35
MY51-S00-018	3400	8		525	562	600	637	675	712	750	0.25	0.30	0.35	0.40
MY51-S00-019	3600	8		562	600	637	675	712	750	787	0.25	0.35	0.40	0.45
MY51-S00-020	3800	8		600	637	675	712	750	787	825	0.25	0.40	0.45	0.50
SPECIAL ORDER OPTIONS														
MY51-S00-021	2500	2		1500	1650	1800	1950	2100	2250	2400	1.00	0.37	0.40	0.45
MY51-S00-022	2800	2		1650	1800	1950	2100	2250	2400	2550	1.00	0.40	0.45	0.50
MY51-S00-023	3000	2		1800	1950	2100	2250	2400	2550	2700	1.00	0.45	0.50	0.55
MY51-S00-024	3200	2		1950	2100	2250	2400	2550	2700	2850	1.00	0.50	0.55	0.60
MY51-S00-025	3400	2		2100	2250	2400	2550	2700	2850	3000	1.00	0.55	0.60	0.65

1957-1958

Table 1: General Information														Table 2: Specific Data		
ID	A	B	C	D	E	Status		F	G	H	I	J	K	Category		Notes
						Value	Label							Sub	Unit	
1	100	200	300	400	500	1	2	10	20	30	40	50	60	70	80	90
2	100	200	300	400	500	1	2	20	40	60	80	100	120	140	160	180
3	100	200	300	400	500	1	2	30	60	90	120	150	180	210	240	270
4	100	200	300	400	500	1	2	40	80	120	160	200	240	280	320	360
5	100	200	300	400	500	1	2	50	100	150	200	250	300	350	400	450
6	100	200	300	400	500	1	2	60	120	180	240	300	360	420	480	540
7	100	200	300	400	500	1	2	70	140	210	280	350	420	490	560	630
8	100	200	300	400	500	1	2	80	160	240	320	400	480	560	640	720
9	100	200	300	400	500	1	2	90	180	270	360	450	540	630	720	810
10	100	200	300	400	500	1	2	100	200	300	400	500	600	700	800	900
11	100	200	300	400	500	1	2	110	220	330	440	550	660	770	880	990
12	100	200	300	400	500	1	2	120	240	360	480	600	720	840	960	1080
13	100	200	300	400	500	1	2	130	260	390	520	650	780	910	1040	1170
14	100	200	300	400	500	1	2	140	280	420	560	700	840	980	1120	1260
15	100	200	300	400	500	1	2	150	300	450	600	750	900	1050	1200	1350
16	100	200	300	400	500	1	2	160	320	480	640	800	960	1120	1280	1440
17	100	200	300	400	500	1	2	170	340	510	680	850	1020	1190	1360	1530
18	100	200	300	400	500	1	2	180	360	540	720	900	1080	1260	1440	1620
19	100	200	300	400	500	1	2	190	380	570	760	950	1140	1330	1520	1710
20	100	200	300	400	500	1	2	200	400	600	800	1000	1200	1400	1600	1800
21	100	200	300	400	500	1	2	210	420	630	840	1050	1260	1470	1680	1890
22	100	200	300	400	500	1	2	220	440	660	880	1100	1320	1540	1760	1980
23	100	200	300	400	500	1	2	230	460	690	920	1150	1380	1610	1840	2070
24	100	200	300	400	500	1	2	240	480	720	960	1200	1440	1680	1920	2160
25	100	200	300	400	500	1	2	250	500	750	1000	1250	1500	1750	2000	2250
26	100	200	300	400	500	1	2	260	520	780	1040	1300	1560	1810	2060	2310
27	100	200	300	400	500	1	2	270	540	810	1080	1350	1610	1860	2110	2360
28	100	200	300	400	500	1	2	280	560	840	1120	1400	1660	1910	2160	2410
29	100	200	300	400	500	1	2	290	580	870	1160	1450	1710	1960	2210	2460
30	100	200	300	400	500	1	2	300	600	900	1200	1500	1760	2010	2260	2510
31	100	200	300	400	500	1	2	310	620	930	1240	1550	1810	2060	2310	2560
32	100	200	300	400	500	1	2	320	640	960	1280	1600	1860	2110	2360	2610
33	100	200	300	400	500	1	2	330	660	990	1320	1650	1910	2160	2410	2660
34	100	200	300	400	500	1	2	340	680	1020	1360	1700	1960	2210	2460	2710
35	100	200	300	400	500	1	2	350	700	1050	1400	1750	2010	2260	2510	2760
36	100	200	300	400	500	1	2	360	720	1080	1440	1800	2060	2310	2560	2810
37	100	200	300	400	500	1	2	370	740	1110	1480	1850	2110	2360	2610	2860
38	100	200	300	400	500	1	2	380	760	1140	1520	1900	2160	2410	2660	2910
39	100	200	300	400	500	1	2	390	780	1170	1560	1950	2210	2460	2710	2960
40	100	200	300	400	500	1	2	400	800	1200	1600	2000	2260	2510	2760	3010
41	100	200	300	400	500	1	2	410	820	1230	1640	2050	2310	2560	2810	3060
42	100	200	300	400	500	1	2	420	840	1260	1680	2100	2360	2610	2860	3110
43	100	200	300	400	500	1	2	430	860	1290	1720	2150	2410	2660	2910	3160
44	100	200	300	400	500	1	2	440	880	1320	1760	2200	2460	2710	2960	3210
45	100	200	300	400	500	1	2	450	900	1350	1800	2250	2510	2760	3010	3260
46	100	200	300	400	500	1	2	460	920	1380	1840	2300	2560	2810	3060	3310
47	100	200	300	400	500	1	2	470	940	1410	1880	2350	2610	2860	3110	3360
48	100	200	300	400	500	1	2	480	960	1440	1920	2400	2660	2910	3160	3410
49	100	200	300	400	500	1	2	490	980	1470	1960	2450	2710	2960	3210	3460
50	100	200	300	400	500	1	2	500	1000	1500	2000	2500	2760	3010	3260	3510
51	100	200	300	400	500	1	2	510	1020	1530	2040	2550	2810	3060	3310	3560
52	100	200	300	400	500	1	2	520	1040	1560	2080	2600	2860	3110	3360	3610
53	100	200	300	400	500	1	2	530	1060	1590	2120	2650	2910	3160	3410	3660
54	100	200	300	400	500	1	2	540	1080	1620	2160	2700	2960	3210	3460	3710
55	100	200	300	400	500	1	2	550	1100	1650	2200	2750	3010	3260	3510	3760
56	100	200	300	400	500	1	2	560	1120	1680	2240	2800	3060	3310	3560	3810
57	100	200	300	400	500	1	2	570	1140	1710	2280	2850	3110	3360	3610	3860
58	100	200	300	400	500	1	2	580	1160	1740	2320	2900	3160	3410	3660	3910
59	100	200	300	400	500	1	2	590	1180	1770	2360	2950	3210	3460	3710	3960
60	100	200	300	400	500	1	2	600	1200	1800	2400	3000	3260	3510	3760	4010
61	100	200	300	400	500	1	2	610	1220	1830	2440	3050	3310	3560	3810	4060
62	100	200	300	400	500	1	2	620	1240	1860	2480	3100	3360	3610	3860	4110
63	100	200	300	400	500	1	2	630	1260	1890	2520	3150	3410	3660	3910	4160
64	100	200	300	400	500	1	2	640	1280	1920	2560	3200	3460	3710	3960	4210
65	100	200	300	400	500	1	2	650	1300	1950	2600	3250	3510	3760	4010	4260
66	100	200	300	400	500	1	2	660	1320	1980	2640	3300	3560	3810	4060	4310
67	100	200	300	400	500	1	2	670	1340	2010	2680	3350	3610	3860	4110	4360
68	100	200	300	400	500	1	2	680	1360	2040	2720	3400	3660	3910	4160	4410
69	100	200	300	400	500	1	2	690	1380	2070	2760	3450	3710	3960	4210	4460
70	100	200	300	400	500	1	2	700	1400	2100	2800	3500	3760	4010	4260	4510
71	100	200	300	400	500	1	2	710	1420	2130	2840	3550	3810	4060	4310	4560
72	100	200	300	400	500	1	2	720	1440	2160	2880	3600	3860	4110	4360	4610
73	100	200	300	400	500	1	2	730	1460	2190	2920	3650	3910	4160	4410	4660
74	100	200	300	400	500	1	2	740	1480	2220	2960	3700	3960	4210	4460	4710
75	100	200	300	400	500	1	2	750	1500	2250	3000	3750	4010	4260	4510	4760
76	100	200	300	400	500	1	2	760	1520	2280	3040	3800	4060	4310	4560	4810
77	100	200	300	400	500	1	2	770	1540	2310	3080	3850	4110	4360	4610	4860
78	100	200	300	400	500	1	2	780	1560	2340	3120	3900	4160	4410	4660	4910
79	100	200	300	400	500	1	2	790	1580	2370	3160	3950	4210	4460	4710	4960
80	100	200	300	400	500	1	2	800	1600	2400	3200	4000	4260	4510	4760	5010
81	100	200	300	400	500	1	2	810	1620	2430	3240	4050	4310	4560	4810	5060
82	100	200	300	400	500	1	2	820	1640	2460	3280	4100	4360	4610	4860	5110
83	100	200	300	400	500	1	2	830	1660	2490	3320	4150	4410	4660	4910	5160
84	100	200	300	400	500	1	2	840	1680	2520	3360	4200	4460	4710	4960	5210
85	100	200	300	400	500	1	2	850	1700	2550	3400	4250	4510	4760	5010	5260
86	100	200	300	400	500	1	2	860	1720	2580	3440	4300	4560	4810	5060	5310
87	100	200	300	400	500	1	2	870	1740	2610	3480</					

4. **POUR** - Pour the mixture into a mold.

DESCRIPTION			PERFORMANCE SPECIFICATIONS								QUALITY ASSURANCE			
ITEM	NAME	UNIT	QTY	Tensile Strength (MPa)		Elongation (%)		Weight (kg)		Min. Temp. (°C)		Max. Temp. (°C)		Notes
				Min.	Max.	Min.	Max.	Min.	Max.	Min.	Max.	Min.	Max.	
001-001	STEEL PIPE (100mm)	m	10	355	455	10	20	10.00	10.10	-40	-30	100	110	1.00
001-002	STEEL PIPE (150mm)	m	15	355	455	10	20	15.00	15.10	-40	-30	100	110	1.00
001-003	STEEL PIPE (200mm)	m	20	355	455	10	20	20.00	20.10	-40	-30	100	110	1.00
001-004	STEEL PIPE (250mm)	m	25	355	455	10	20	25.00	25.10	-40	-30	100	110	1.00
001-005	STEEL PIPE (300mm)	m	30	355	455	10	20	30.00	30.10	-40	-30	100	110	1.00
001-006	STEEL PIPE (350mm)	m	35	355	455	10	20	35.00	35.10	-40	-30	100	110	1.00
001-007	STEEL PIPE (400mm)	m	40	355	455	10	20	40.00	40.10	-40	-30	100	110	1.00
001-008	STEEL PIPE (450mm)	m	45	355	455	10	20	45.00	45.10	-40	-30	100	110	1.00
001-009	STEEL PIPE (500mm)	m	50	355	455	10	20	50.00	50.10	-40	-30	100	110	1.00
001-010	STEEL PIPE (550mm)	m	55	355	455	10	20	55.00	55.10	-40	-30	100	110	1.00
001-011	STEEL PIPE (600mm)	m	60	355	455	10	20	60.00	60.10	-40	-30	100	110	1.00
001-012	STEEL PIPE (650mm)	m	65	355	455	10	20	65.00	65.10	-40	-30	100	110	1.00
001-013	STEEL PIPE (700mm)	m	70	355	455	10	20	70.00	70.10	-40	-30	100	110	1.00
001-014	STEEL PIPE (750mm)	m	75	355	455	10	20	75.00	75.10	-40	-30	100	110	1.00
001-015	STEEL PIPE (800mm)	m	80	355	455	10	20	80.00	80.10	-40	-30	100	110	1.00
001-016	STEEL PIPE (850mm)	m	85	355	455	10	20	85.00	85.10	-40	-30	100	110	1.00
001-017	STEEL PIPE (900mm)	m	90	355	455	10	20	90.00	90.10	-40	-30	100	110	1.00
001-018	STEEL PIPE (950mm)	m	95	355	455	10	20	95.00	95.10	-40	-30	100	110	1.00
001-019	STEEL PIPE (1000mm)	m	100	355	455	10	20	100.00	100.10	-40	-30	100	110	1.00
001-020	STEEL PIPE (1050mm)	m	105	355	455	10	20	105.00	105.10	-40	-30	100	110	1.00
001-021	STEEL PIPE (1100mm)	m	110	355	455	10	20	110.00	110.10	-40	-30	100	110	1.00
001-022	STEEL PIPE (1150mm)	m	115	355	455	10	20	115.00	115.10	-40	-30	100	110	1.00
001-023	STEEL PIPE (1200mm)	m	120	355	455	10	20	120.00	120.10	-40	-30	100	110	1.00
001-024	STEEL PIPE (1250mm)	m	125	355	455	10	20	125.00	125.10	-40	-30	100	110	1.00
001-025	STEEL PIPE (1300mm)	m	130	355	455	10	20	130.00	130.10	-40	-30	100	110	1.00
001-026	STEEL PIPE (1350mm)	m	135	355	455	10	20	135.00	135.10	-40	-30	100	110	1.00
001-027	STEEL PIPE (1400mm)	m	140	355	455	10	20	140.00	140.10	-40	-30	100	110	1.00
001-028	STEEL PIPE (1450mm)	m	145	355	455	10	20	145.00	145.10	-40	-30	100	110	1.00
001-029	STEEL PIPE (1500mm)	m	150	355	455	10	20	150.00	150.10	-40	-30	100	110	1.00
001-030	STEEL PIPE (1550mm)	m	155	355	455	10	20	155.00	155.10	-40	-30	100	110	1.00
001-031	STEEL PIPE (1600mm)	m	160	355	455	10	20	160.00	160.10	-40	-30	100	110	1.00
001-032	STEEL PIPE (1650mm)	m	165	355	455	10	20	165.00	165.10	-40	-30	100	110	1.00
001-033	STEEL PIPE (1700mm)	m	170	355	455	10	20	170.00	170.10	-40	-30	100	110	1.00
001-034	STEEL PIPE (1750mm)	m	175	355	455	10	20	175.00	175.10	-40	-30	100	110	1.00
001-035	STEEL PIPE (1800mm)	m	180	355	455	10	20	180.00	180.10	-40	-30	100	110	1.00
001-036	STEEL PIPE (1850mm)	m	185	355	455	10	20	185.00	185.10	-40	-30	100	110	1.00
001-037	STEEL PIPE (1900mm)	m	190	355	455	10	20	190.00	190.10	-40	-30	100	110	1.00
001-038	STEEL PIPE (1950mm)	m	195	355	455	10	20	195.00	195.10	-40	-30	100	110	1.00
001-039	STEEL PIPE (2000mm)	m	200	355	455	10	20	200.00	200.10	-40	-30	100	110	1.00
001-040	STEEL PIPE (2050mm)	m	205	355	455	10	20	205.00	205.10	-40	-30	100	110	1.00
001-041	STEEL PIPE (2100mm)	m	210	355	455	10	20	210.00	210.10	-40	-30	100	110	1.00
001-042	STEEL PIPE (2150mm)	m	215	355	455	10	20	215.00	215.10	-40	-30	100	110	1.00
001-043	STEEL PIPE (2200mm)	m	220	355	455	10	20	220.00	220.10	-40	-30	100	110	1.00
001-044	STEEL PIPE (2250mm)	m	225	355	455	10	20	225.00	225.10	-40	-30	100	110	1.00
001-045	STEEL PIPE (2300mm)	m	230	355	455	10	20	230.00	230.10	-40	-30	100	110	1.00
001-046	STEEL PIPE (2350mm)	m	235	355	455	10	20	235.00	235.10	-40	-30	100	110	1.00
001-047	STEEL PIPE (2400mm)	m	240	355	455	10	20	240.00	240.10	-40	-30	100	110	1.00
001-048	STEEL PIPE (2450mm)	m	245	355	455	10	20	245.00	245.10	-40	-30	100	110	1.00
001-049	STEEL PIPE (2500mm)	m	250	355	455	10	20	250.00	250.10	-40	-30	100	110	1.00
001-050	STEEL PIPE (2550mm)	m	255	355	455	10	20	255.00	255.10	-40	-30	100	110	1.00
001-051	STEEL PIPE (2600mm)	m	260	355	455	10	20	260.00	260.10	-40	-30	100	110	1.00
001-052	STEEL PIPE (2650mm)	m	265	355	455	10	20	265.00	265.10	-40	-30	100	110	1.00
001-053	STEEL PIPE (2700mm)	m	270	355	455	10	20	270.00	270.10	-40	-30	100	110	1.00
001-054	STEEL PIPE (2750mm)	m	275	355	455	10	20	275.00	275.10	-40	-30	100	110	1.00
001-055	STEEL PIPE (2800mm)	m	280	355	455	10	20	280.00	280.10	-40	-30	100	110	1.00
001-056	STEEL PIPE (2850mm)	m	285	355	455	10	20	285.00	285.10	-40	-30	100	110	1.00
001-057	STEEL PIPE (2900mm)	m	290	355	455	10	20	290.00	290.10	-40	-30	100	110	1.00
001-058	STEEL PIPE (2950mm)	m	295	355	455	10	20	295.00	295.10	-40	-30	100	110	1.00
001-059	STEEL PIPE (3000mm)	m	300	355	455	10	20	300.00	300.10	-40	-30	100	110	1.00
001-060	STEEL PIPE (3050mm)	m	305	355	455	10	20	305.00	305.10	-40	-30	100	110	1.00
001-061	STEEL PIPE (3100mm)	m	310	355	455	10	20	310.00	310.10	-40	-30	100	110	1.00
001-062	STEEL PIPE (3150mm)	m	315	355	455	10	20	315.00	315.10	-40	-30	100	110	1.00
001-063	STEEL PIPE (3200mm)	m	320	355	455	10	20	320.00	320.10	-40	-30	100	110	1.00
001-064	STEEL PIPE (3250mm)	m	325	355	455	10	20	325.00	325.10	-40	-30	100	110	1.00
001-065	STEEL PIPE (3300mm)	m	330	355	455	10	20	330.00	330.10	-40	-30	100	110	1.00
001-066	STEEL PIPE (3350mm)	m	335	355	455	10	20	335.00	335.10	-40	-30	100	110	1.00
001-067	STEEL PIPE (3400mm)	m	340	355	455	10	20	340.00	340.10	-40	-30	100	110	1.00
001-068	STEEL PIPE (3450mm)	m	345	355	455	10	20	345.00	345.10	-40	-30	100	110	1.00
001-069	STEEL PIPE (3500mm)	m	350	355	455	10	20	350.00	350.10	-40	-30	100	110	1.00
001-070	STEEL PIPE (3550mm)	m	355	355	455	10	20	355.00	355.10	-40	-30	100	110	1.00
001-071	STEEL PIPE (3600mm)	m	360	355	455	10	20	360.00	360.10	-40	-30	100	110	1.00
001-072	STEEL PIPE (3650mm)	m	365	355	455	10	20	365.00	365.10	-40	-30	100	110	1.00
001-073	STEEL PIPE (3700mm)	m	370	355	455	10	20	370.00	370.10	-40	-30	100	110	1.00
001-074	STEEL PIPE (3750mm)	m	375	355	455	10	20	375.00	375.10	-40	-30	100	110	1.00
001-075	STEEL PIPE (3800mm)	m	380	355	455	10	20	380.00	380.10	-40	-30	100	110	1.00
001-076	STEEL PIPE (3850mm)	m	385	355	455	10	20	385.00	385.10	-40	-30	100	110	1.00
001-077	STEEL PIPE (3900mm)	m	390	355	455	10	20	390.00	390.10	-40	-30	100	110	1.00
001-078	STEEL PIPE (3950mm)	m	395	355	455	10	20	395.00	395.10	-40	-30	100	110	1.00
001-079	STEEL PIPE (4000mm)	m	400	355	455	10	20	400.00	400.10	-40	-30	100	110	1.00
001-080	STEEL PIPE (4050mm)	m	405	355	455	10	20	405.00	405.10	-40	-30	100	110	1.00
001-081	STEEL PIPE (4100mm)	m	410	355	455	10	20	410.00	410.10	-40	-30	100	110	1.00
001-082	STEEL PIPE (4150mm)	m	415	355	455	10	20	415.00	415.10	-40	-30	100	110	1.00
001-083	STEEL PIPE (4200mm)	m	420	355	455	10	20	420.00	420.10	-40	-30	100	110	1.00
001-084	STEEL PIPE (4250mm)	m	425	355	455	10	20	425.00	425.10	-40	-30	100	110	1.00
001-085	STEEL PIPE (4300mm)	m	430	355	455	10	20	430.00	430.10	-40	-30	100	110	1.00
001-086	STEEL PIPE (4350mm)	m	435	355	455	10	20	435.00	435.10	-40	-30	100	110	1.00
001-087	STEEL PIPE (4400mm)	m	440	355	455	10	20	440.00	440.10	-40	-30	100	110	1.00
001-088	STEEL PIPE (4450mm)	m	445	355	455	10	20	445.00	445.10	-40	-30	100	110	1.00
001-089	STEEL PIPE (4500mm)	m	450	355	455	10	20	450.00	450.10	-40	-30	100	110	1.00
001-090	STEEL PIPE (4550mm)	m	455	355	455	10	20	455.00	455.10	-40	-30	100	110	1.00
001-091	STEEL PIPE (4600mm)	m	460	355	455	10	20	460.00	460.10	-40	-30	100	110	1.00
001-092	STEEL PIPE (4650mm)	m	465											

Fig. C

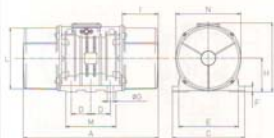
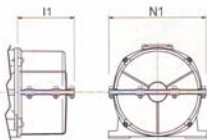
Version TS with 1 or 2 split covers
(Details in Figs. A - C)**MVSI-S90****4 POLES - 1500/1800 rpm****DIMENSIONAL SPECIFICATIONS (mm)**

Figure	A	B	C	D	E	Holes		F	H	I	L	M	N	Versions with 1 or 2 split covers		Cable entry thread
						OG	N°							I1	N1	
A	210	142	125	62-74	106	9	4	15	55	40	90	102	102	-	-	PG13.5
A	220	151	125	62-74	106	9	4	24	64	45	112	102	119	-	-	PG13.5
A	298	181	152	90	125	13	4	29.5	73	73.5	127	117	135	-	-	PG13.5
A	345	198	167	105	140	13	4	28.5	80	90	146	137	153	-	-	PG16
A	381	198	167	105	140	13	4	28.5	80	107	146	137	153	-	-	PG16
A	381	210	205	120	170	17	4	45	91.5	88	168	160	178	-	-	PG16
A	435	233	205	120	170	17	4	54	104.5	117.5	187	162	203	-	-	PG16
A	448	246	230	140	190	17	4	54	116	108	210	180	225	-	-	PG16
A	500	246	230	140	190	17	4	54	116	134	210	180	225	-	-	PG16
A	568	246	230	140	190	17	4	54	116	168	210	180	225	-	-	PG16
A	537	273	278	155	225	22	4	72	133	137	238	205	253	-	-	PG16
A	617	273	278	155	225	22	4	72	133	177	238	205	253	-	-	PG16
A	584	333	310	155	255	23.5	4	77	157	137	280	215	295	-	-	PG21
A	666	333	310	155	255	23.5	4	77	157	178	280	215	295	-	-	PG21
A	630	360	340	180	280	26	4	80	165	150	305	240	320	178	356	PG21
A	676	370	390	200	320	28	4	90	180	158	330	270	350	-	-	PG21
A	629	395	392	200	320	28	4	100	192	135	355	270	375	-	-	PG21
C	862	436	460	125	380	38	6	35	215	230	387	320	414	246	450	1" GAS+
C	990	454	530	140	440	45	6	38	230	240	423	370	448	-	-	1" GAS+
C	990	454	530	140	440	45	6	38	230	240	423	370	448	-	-	1" GAS+

SINGLE-PHASE VERSIONS

Figure	A	B	C	D	E	Holes		F	H	I	L	M	N	Capacitor (µF)		Cable entry thread
						OG	N°							Any above 1000-6000		
A	210	142	125	62-74	106	9	4	15	55	40	90	102	102	-	25	PG13.5
A	220	151	125	62-74	106	9	4	24	64	45	112	102	119	-	25	PG13.5
A	298	181	152	90	125	13	4	29.5	73	73.5	127	117	135	5	25	PG13.5
A	344	198	167	105	140	13	4	28.5	80	89	146	137	153	-	35	PG16
A	381	198	167	105	140	13	4	28.5	80	107	146	137	153	-	40 (V30)	PG16

VERSIONS FOR POTENTIALLY EXPLOSIVE ATMOSPHERES

-	T3C	T4
-	T3C	T4
T4	T3C	T4
T3, T4	T3C	T4
T3, T4	T3C	T4
T3, T4	T3C	T4
T4	T3C	T4
T3, T4	T3C	T4
T3, T4	T3C	T4
-	-	-
T3, T4	T3C	T4
-	-	-
T3	T3C	T4
-	T3C	T4
-	-	T4
T3	-	T4
-	-	T4
-	-	-
-	-	-
-	T3C	-
-	-	-
-	-	-
-	-	-

Fig. A

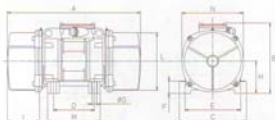
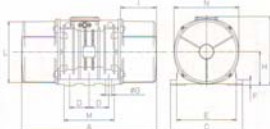



Fig. C

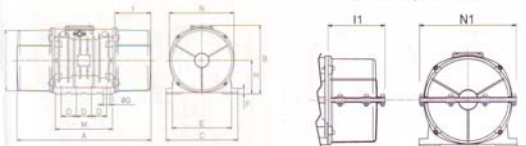


MVSI-S90

6 POLES - 1000/1200 rpm

DESCRIPTION				MECHANICAL SPECIFICATIONS										ELECTRICAL SPECIFICATIONS					
CODE	TYPE	SIZE		Static moment (")		Centrifugal force				Weight		Max. input power		Max. current		Ia/in			
				kgm ²		kg		kN		kg		W		A					
				50 Hz	60 Hz	50 Hz	60 Hz	50 Hz	60 Hz	50 Hz	60 Hz	50 Hz	60 Hz	50 Hz	60 Hz	50 Hz	60 Hz		
602169	MVSI 10/40-S90	10	•	30.1	30.1	35.0	49.0	0.331	0.478	8.30	8.30	120	135	0.30	0.30	1.90	2.07		
602170	MVSI 10/100-S90	10	•	84.2	84.2	94.3	136	0.925	1.33	10.7	10.7	120	135	0.30	0.30	1.90	2.07		
602098	MVSI 10/200-S90	20	•	163	163	183	264	1.80	2.59	16.9	16.9	185	205	0.50	0.50	2.72	3.10		
602082	MVSI 10/310-S90	30	•	286	209	321	338	3.15	3.32	23.5	22.2	350	380	0.72	0.68	2.63	2.79		
602150	MVSI 10/550-S90	35	•	457	457	512	737	5.02	7.23	36.5	36.5	350	380	0.75	0.68	2.53	3.68		
602161	MVSI 10/810-S90	40	•	723	561	809	905	7.94	8.88	54.0	52.6	680	760	1.40	1.35	2.79	3.33		
602162	MVSI 10/1110-S90	50	•	1012	715	1132	1151	11.1	11.3	67.0	59.5	750	750	1.65	1.50	3.33	4.13		
602228	MVSI 10/1400-S90	50	-	1274	904	1424	1455	14.0	14.3	78.0	71.0	950	1000	2.10	2.0	3.60	4.30		
602165	MVSI 10/1610-S90	60	•	1404	962	1638	1549	16.1	15.2	94.0	83.0	1100	1300	2.20	2.20	4.21	4.05		
602217	MVSI 10/1800-S90	60	-	1608	1087	1800	1750	17.7	17.2	99.0	87.0	SOON TO BE AVAILABLE							
602229	MVSI 10/2100-S90	60	-	1927	1318	2154	2121	21.1	20.8	105	93.0	1500	1700	3.00	2.90	4.50	4.20		
602167	MVSI 10/2610-S90	70	•	2326	1706	2601	2747	25.5	26.9	130	116	1960	2100	4.10	3.75	5.35	5.60		
602230	MVSI 10/3000-S90	70	-	2690	1940	3007	3124	29.5	30.6	145	130	2200	2400	4.50	4.30	4.35	4.81		
602154	MVSI 10/3810-S90	80	•	3422	2380	3826	3831	37.5	37.6	188	170	2500	3000	5.10	5.00	5.91	6.00		
602204	MVSI 10/4700-S90	80	-	4206	2887	4701	4648	46.1	46.0	204	183	3200	3600	6.50	6.00	5.24	5.50		
602138	MVSI 10/5200-S90	90	•	4658	3288	5208	5293	51.1	51.9	238	215	3800	4000	7.00	6.50	4.71	5.08		
602218	MVSI 10/5600-S90	90	-	5010	3480	5600	5600	54.9	54.9	248	230	SOON TO BE AVAILABLE							
602091	MVSI 10/6000-S90	90	•	5838	4055	6527	6529	64.0	64.0	268	258	4300	5000	8.20	8.10	4.51	5.83		
602136	MVSI 10/6600-S90	97	-	6083	3979	6799	6405	66.7	62.8	285	257	5000	5900	10.0	9.80	5.61	5.82		
602219	MVSI 10/7000-S90	95	-	6250	4348	7000	7000	68.7	68.7	305	270	SOON TO BE AVAILABLE							
602092	MVSI 10/8000-S90	95	-	7197	4967	8046	7996	78.9	78.4	320	282	7000	7500	9.60	13.0	4.59	5.58		
602093	MVSI 10/9000-S90	95	-	7752	5385	8666	8669	85.0	85.0	326	289	7500	8200	14.0	12.9	4.13	4.88		
602137	MVSI 10/10000-S90	97	-	8673	5664	9695	9117	95.1	89.4	381	340	7600	8000	13.5	12.4	4.72	4.92		
602220	MVSI 10/11600-S90	97	-	10089	6830	11300	11000	111	108	400	360	SOON TO BE AVAILABLE							
602134	MVSI 10/12000-S90	100	-	10996	7543	12294	12141	119	119	500	445	9000	9500	16.3	15.0	5.21	5.73		
602227	MVSI 10/13000-S90	97	-	11510	7329	12867	11800	126	122	420	382	9600	10000	17.0	16.0	4.98	5.00		
602142	MVSI 10/15000-S90	105	-	12662	8700	14155	14004	139	137	643	605	10600	11270	19.0	18.0	5.86	5.78		
602221	MVSI 10/15600-S90	100	-	13400	9320	15000	14500	147	147	540	490	10600	11270	19.0	18.0	5.86	5.78		
602143	MVSI 10/17500-S90	105	-	15500	10439	17327	16804	170	165	705	656	13000	13700	24.5	23.0	5.71	5.96		
602144	MVSI 10/22000-S90	110	-	20025	12553	22386	20208	220	198	926	896	19000	19000	33.0	25.5	4.67	5.88		
SINGLE-PHASE VERSIONS														200 V 115 V					
602082	MVSI 10/310-S90	30	-	-	209	-	338	-	3.32	-	22.2	-	400	-	3.60	-	28		

Version TS with 1 or 2 split covers
(Details in Figs. A - C - F)



6 POLES - 1000/1200 rpm

DIMENSIONAL SPECIFICATIONS (mm)																
Type	A	B	C	D	E	Holes		F	H	I	L	M	N	Versions with 1 or 2 split covers		Cable entry thread
						OG	N							H	N1	
A	245	181	152	90	125	13	4	29.5	73	47	127	117	135	-	-	PG13.5
A	298	181	152	90	125	13	4	29.5	73	75	127	117	135	-	-	PG13.5
A	345	198	167	105	140	13	4	28.5	80	90	146	137	153	-	-	PG16
A	381	210	205	120	170	17	4	45	91.5	88	168	160	178	-	-	PG16
A	435	233	205	120	170	17	4	54	104.5	117.5	187	182	203	-	-	PG16
A	246	230	140	190	17	4	54	116	188	210	180	225	-	-	-	PG16
A	246	230	140	190	17	4	54	116	188	210	180	225	-	-	-	PG16
A	608	246	230	140	190	17	4	54	116	188	210	180	225	-	-	PG16
A	273	278	155	225	22	4	72	133	238	205	253	-	-	-	-	PG16
SOON TO BE AVAILABLE																
A	273	278	155	225	22	4	72	133	238	205	253	-	-	-	-	PG16
A	666	333	310	155	255	23.5	4	77	157	178	277	215	295	-	-	PG21
A	706	333	310	155	255	23.5	4	77	157	198	277	215	295	-	-	PG21
A	730	360	340	180	280	26	4	80	165	200	305	240	320	226	356	PG21
A	796	360	340	180	280	26	4	80	165	233	305	240	320	259	356	PG21
A	740	370	360	200	320	28	4	90	180	190	330	270	350	266	382	PG21
SOON TO BE AVAILABLE																
A	840	370	360	200	320	28	4	90	180	240	330	270	350	266	382	PG21
A	750	436	460	125	380	38	6	35	215	174	387	320	414	-	-	1" GAS
SOON TO BE AVAILABLE																
A	870	395	392	200	320	28	4	100	192	255	355	270	375	280	410	PG21
A	870	395	392	200	320	28	4	100	192	255	355	270	375	280	410	PG21
C	862	436	460	125	380	38	6	35	215	230	387	320	414	246	450	1" GAS
SOON TO BE AVAILABLE																
C	990	454	530	140	440	45	6	38	230	240	420	370	448	-	-	1" GAS
C	1002	436	460	125	380	38	6	35	215	300	387	320	414	-	-	1" GAS
C	960	526	570	140	480	45	6	41	268	200	495	510	516	270	566	1" GAS
SOON TO BE AVAILABLE																
F	1040	526	570	140	480	45	6	41	268	240	495	510	516	270	566	1" GAS
F	1150	607	610	140	520	45	6	38	297	297.5	542	510	582	-	-	1" GAS
SINGLE-PHASE VERSIONS																
A	381	210	205	120	170	17	4	45	91.5	88	168	160	178	-	28	PG16

[illegible]

Fig. A

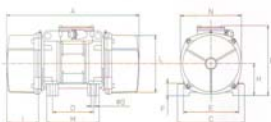
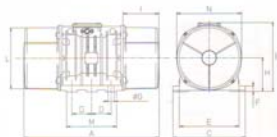


Fig. C



MVSI-S90

8 POLES - 750/900 rpm

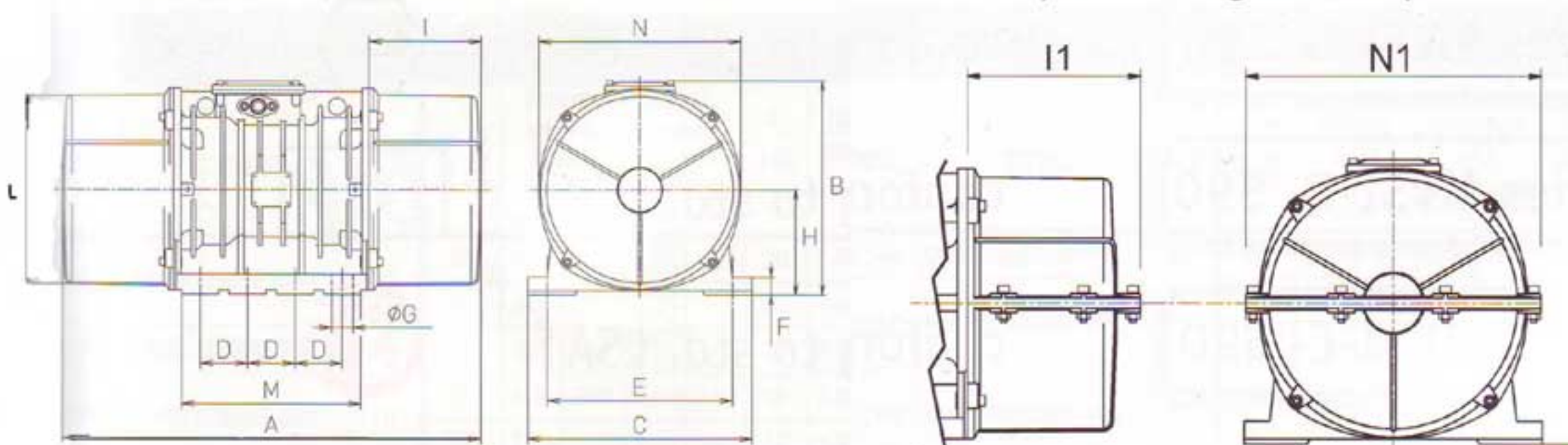
DESCRIPTION				MECHANICAL SPECIFICATIONS								ELECTRICAL SPECIFICATIONS							
CODE	TYPE	SIZE		Static moment (°) kgmm		Centrifugal force				Weight kg		Max. input power W		Max. current A		Ia/In			
				50 Hz	60 Hz	50 Hz	60 Hz	50 Hz	60 Hz	50 Hz	60 Hz	50 Hz	60 Hz	50 Hz	60 Hz	50 Hz	60 Hz		
602883	MVSI 075/150-S90	20	•	163	163	104	149	1.02	1.46	16.9	16.9	230	250	0.85	0.76	2.13	2.1		
602816	MVSI 075/250-S90	30	•	286	286	181	260	1.76	2.55	23.5	23.5	350	380	1.10	1.05	2.03	2.29		
602865	MVSI 075/400-S90	35	•	457	457	288	415	2.83	4.07	36.5	36.5	280	300	0.60	0.58	1.73	2.50		
602888	MVSI 075/660-S90	40	•	723	723	456	656	4.47	6.44	54	54	400	450	1.20	1.20	2.38	2.58		
602889	MVSI 075/910-S90	50	•	1012	1012	637	917	6.25	9.00	67	67	400	500	1.40	1.30	2.38	2.85		
602890	MVSI 075/1310-S90	60	•	1464	1464	922	1327	9.04	13.0	94	94	950	1100	2.20	2.20	2.63	3.41		
602891	MVSI 075/2110-S90	70	•	2326	2326	1463	2107	14.4	20.7	130	130	1500	1790	4.10	4.20	3.55	2.95		
602884	MVSI 075/3110-S90	80	•	3421	3421	2152	3099	21.1	30.4	188	188	2000	2300	5.40	5.20	3.98	4.62		
602515	MVSI 075/3800-S90	80	-	4206	4206	2645	3808	25.9	37.4	204	204	2500	3000	6.00	6.00	4.00	4.20		
602862	MVSI 075/4200-S90	90	•	4658	4658	2930	4218	28.7	41.4	238	238	2800	3350	6.50	6.50	3.84	4.00		
602826	MVSI 075/5300-S90	90	•	5838	5838	3672	5287	36.0	51.9	268	268	4000	4300	8.20	7.85	3.87	5.35		
602827	MVSI 075/6500-S90	95	-	7197	7197	4526	6517	44.4	63.9	320	320	4900	5800	9.90	9.50	3.04	3.26		
602870	MVSI 075/10000-S90	97	-	12390	10973	7792	9937	76.4	97.5	438	419	6800	7450	13.2	12.0	3.33	3.92		
602863	MVSI 075/12000-S90	100	-	13816	12407	8689	11235	85.2	110	540	520	7600	8300	14.0	13.5	3.72	3.78		
602871	MVSI 075/14000-S90	105	-	17946	15500	11285	14036	111	138	702	680	9200	9600	21.0	19.5	4.99	5.44		
602872	MVSI 075/17000-S90	105	-	21337	19064	13418	17263	132	169	755	711	10400	11140	22.0	20.0	5.50	5.90		
602873	MVSI 075/22000-S90	110	-	28633	24508	18005	22192	177	218	1015	981	12500	16200	26.5	28.0	5.83	4.71		

(°) Working moment = 2 x Static moment

MVSI S90 10, 12 POLES - 600/720 rpm LOW SPEED ELECTRIC VIBRATORS

Fig. F

TS version with 1 or 2 split covers
(Details in Figs. A - C - F)



MVSI-S90

8 POLES - 750/900 rpm

DIMENSIONAL SPECIFICATIONS (mm)

Figure	A	B	C	D	E	Holes		F	H	I	L	M	N	Versions with 1 or 2 split covers		Cable entry thread
						ØG	N°							I1	N1	
A	345	198	167	105	140	13	4	28.5	80	90	146	137	153	-	-	PG16
A	381	210	205	120	170	17	4	45	91.5	88	168	160	178	-	-	PG16
A	435	233	205	120	170	17	4	54	104.5	117.5	187	162	203	-	-	PG16
A	500	246	230	140	190	17	4	54	116	134	210	180	225	-	-	PG16
A	568	246	230	140	190	17	4	54	116	168	210	180	225	-	-	PG16
A	617	273	278	155	225	22	4	72	133	177	238	205	253	-	-	PG16
A	666	333	310	155	255	23.5	4	77	157	178	280	215	295	-	-	PG21
A	734	360	340	180	280	26	4	80	165	202	305	240	320	226	356	PG21
A	796	360	340	180	280	26	4	80	165	233	305	240	320	-	-	PG21
A	740	370	390	200	320	28	4	90	180	190	330	270	350	266	382	PG21
A	840	370	390	200	320	28	4	90	180	240	330	270	350	266	382	PG21
A	870	395	392	200	320	28	4	100	192	255	355	270	375	280	410	PG21
C	1002	436	460	125	380	38	6	35	215	300	387	320	414	-	-	1"GAS•
C	1070	454	530	140	440	45	6	38	230	280	423	370	448	-	-	1"GAS•
F	1040	526	570	140	480	45	8	41	268	240	485	510	516	270	566	1"GAS•
F	1120	526	570	140	480	45	8	41	268	280	485	510	516	310	566	1"GAS•
F	1150	607	610	140	520	45	8	38	297	297.5	542	510	582	-	-	1"GAS•

VERSIONS FOR POTENTIALLY EXPLOSIVE ATMOSPHERES

Ex	SP	DIP
EEEx e II	CL I Div. 2 Gr. A,B,C,D	AS 2236 1985
T3	T3C	T4
T3	T3C	T4
T4	T3C	T4
T3	T3C	T4
T3, T4	T3C	T4
T3	T3C	T4
T3	T3C	T4
-	-	-
T3	T3C	T4
T3	T3C	T4
-	-	T4
T3	-	T4
-	-	T4
-	-	T4
-	-	T4